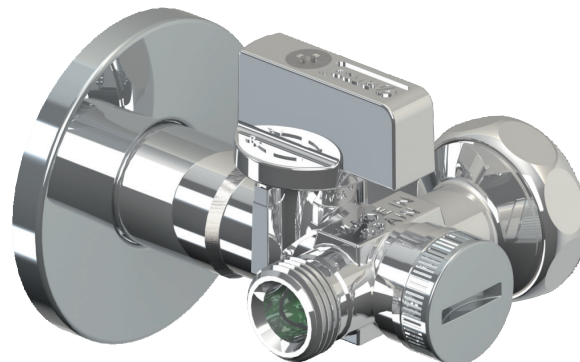




dual filter vitaq



TECHNICAL SCOPE 07/2015 | IPO2053

SCOPE

DUAL FILTER VITAQ2 outlet valves are used to plumbing networks with just one outlet but is required 2 inlets, e.g: a water tap and a dishwasher or a sink and a washer machine....

These valves are operated by quarter turn and are used to shut off simultaneously water supply of both inlets to proceed to repair or replace them.

VITAQ SYSTEM used in DUAL FILTER adds a filter, to prevent from the suspension particles, and the anti-lime polymer stem-ball

This filter avoids deposition of small solids and other impurities, and protect the components of the installation, e.g. water taps, dishwasher,

VITAQ SYSTEM enhance the lifespan of the valve and reduce the maintenance in networks with high lime levels.

DUAL FILTER valves are supplied with a blind nut for the $\frac{3}{4}$ outlet, this blind nut makes possible the installation of just one equipment, waiting for the installation of the second one.

Reduction of over 80% of installation time
Reducing the number of accessories
Reduced installation space

SERVICE CONDITIONS

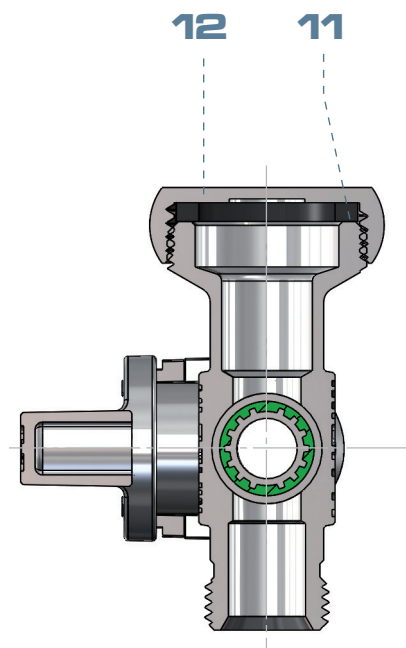
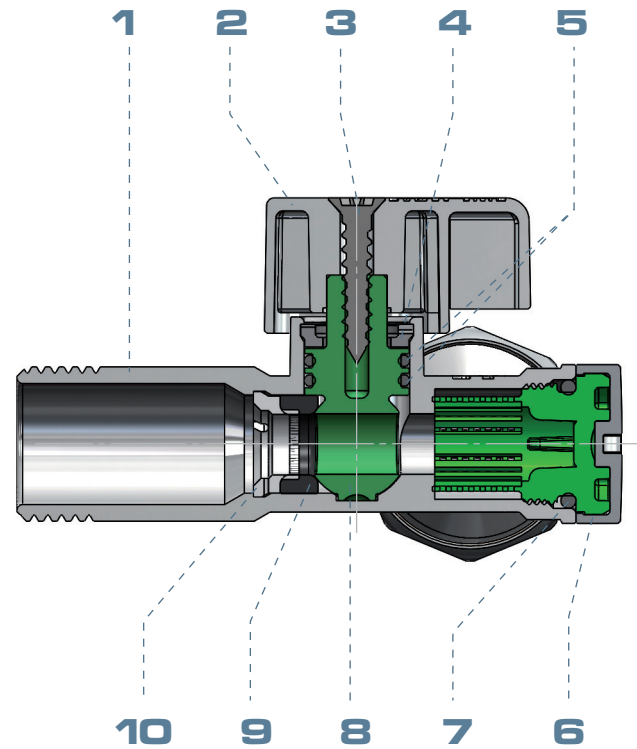
Nominal pressure:	16 bar
Test pressure:	25 bar
Temperatura range:	cold and hot water up to 95°C
Fluid:	Water intended to human consumption and domestic hot water





COMPONENTS

Item	Component	Material	Treatment
1	Body	European Brass CW617N	Chrome plated
2	Handle1	Metal	Chrome plated
3	Screw	Stainless steel	
4	Supporting clip	POM	
5	O-ring	NBR	
6	Filter	POM	
7	O-ring	NBR	
8	Stem-ball	Anti-lime polymer	
9	Seat	NBR	
10	Supporting clip	POM	
11	Washer	NBR	
12	Blind nut	European Brass CW614N	Chrome plated





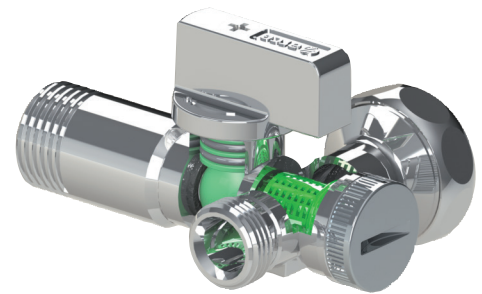
MAIN CONSTRUCTIVE FEATURES

VITAQ SYSTEM

Stem and ball are manufactured in one piece made of special anti-lime polymer, which increases its resistance, allows a softer operation of the valve and blocks the lime adhesion on it.

In those installations where water's hardness and temperature make easier the lime deposition, as well as a low maneuver frequency; leads to the valve's hard operation after long periods of time.

VITAQ SYSTEM is the solution to avoid a hard operation and keep a constant flow rate and avoid the loss of flow caused by the lime adhered.



VITAQ FILTER

The new anti-lime polymeric VITAQ FILTER prevents the lime adhered and therefore avoids the flow reduction, maintaining the water flow over the time and prevents continuous maintenance.



LEAKTIGHTNESS

Internal

A NBR SEAT pushed against the stem-ball by the mean of a supporting clip made of POM, guarantees the internal leak tightness.

This system provides an extra anti-tampering feature, avoiding dismantling and improper manipulations.

External

A double NBR seal placed on the stem-ball assure external leak tightness. This system guarantees double safety against external leakage, use, ageing ...

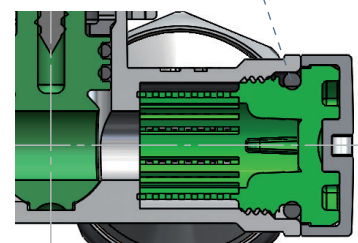
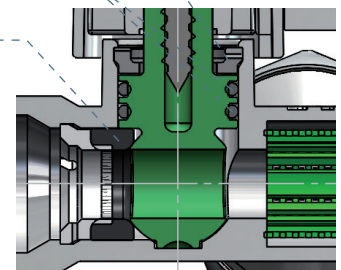
A NBR seal assure the external leak tightness between the filter cap and the valve.

Supporting clip

O-rings

Seat

O-ring

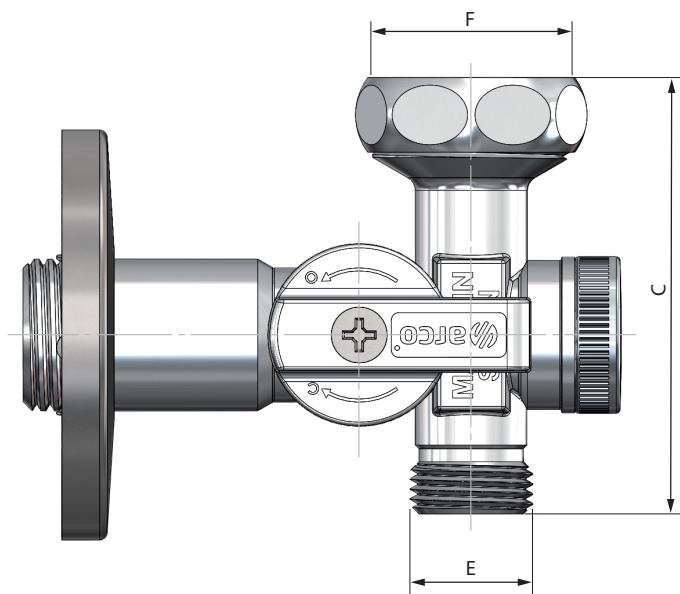
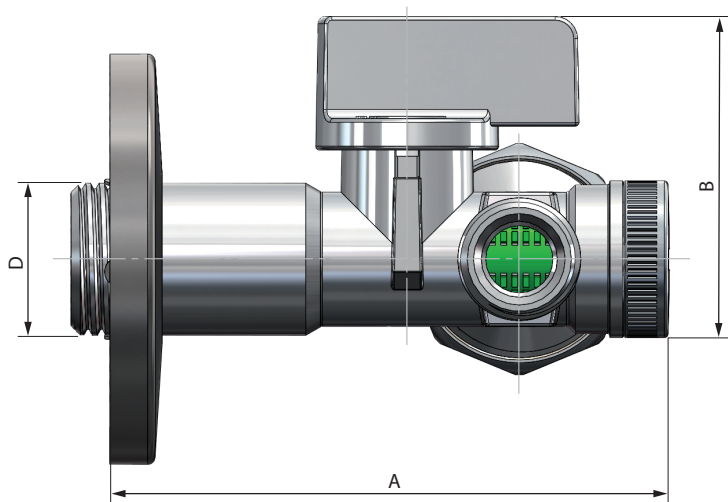




DIMENSIONS

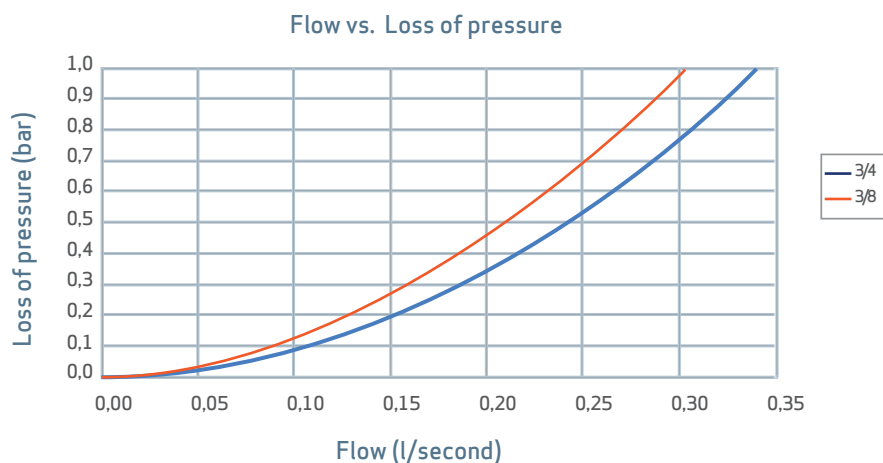
Size	A	B	C	D	E	F
1/2x3/8x3/4	80	42	58	G1/2	G3/8	G3/4M

G Thread ISO 228



HYDRAULIC FEATURES

Hydraulic characteristics obtained according to EN 1267.



INSTALATION AND ASSEMBLY

The installation of valves must be done with the right tool.

The tool should be adjusted to the flat sides of the body of the valve, avoiding the deformation of the zone by high pressure of the tool.

Components of the valve must not be altered. The substitution or dismantling of the handle can cause external leaks.

All quarter turn handle valves should work totally open.

CLEANNES OF FILTER

To clean the filter the valve must be totally closed. After this is done the filter can be unscrewing.

After cleaning the filter with water, it can be placed again and screwed on the valve. Finally open the valve and check for leak-tightness.

It is recommended to clean the filter once every three months.

